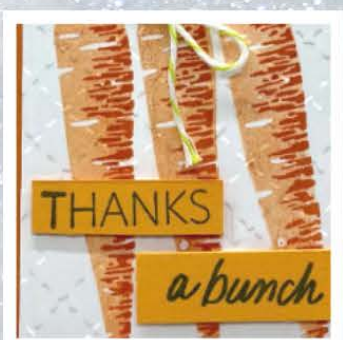
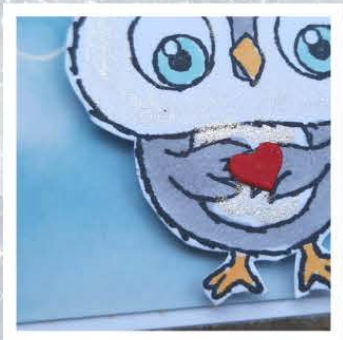




Demo Design Dream Team



SNEAK PEEK | January 2023

Head over Heels about you



All images © 1990-2022 Stampin' Up!®

Supplies:

- Stamp Sets: Love Cats (160410)
- Cardstock: Thick Basic White (159229) Basic Black (121045)
- Ink: Tuxedo Memento Black (132708)
- Designer Series Paper: Country Gingham 6x6 (160388) Country Floral Lane (160375)
- Tools & Accessories: Stamp Cut & Emboss Machine (149653), Paper Trimmer (152392), Multi-purpose glue (110755), Stampin' Dimensionals (104430) Basic Pearls (144219) Dark Sweet Sorbet Stampin' Blends (159224) Stitched Shapes dies (159183)

Measurements:

- Card Base: 5 ½" x 8 ½" scored @ 4 ¼"
- Cardstock #2: 4 ⅛" x 5 ¾"
- DSP #1: Die-cut largest square from Stitched Shapes
- DSP #2: cut 4" x 5 ¼"
- Scrap white - to die cut with 3rd square (approx size 1 ⅞" sq) and sentiment label
- Scrap black - to die cut the thin label

Instructions:

- Adhere the 4 x 5 ¼" DSP to black cardstock, then adhere to card front
- Die-cut DSP (with hearts) using largest square - or shape of your choice.
- Stamp cat image on white cardstock - die-cut with sq and adhere to the DSP with dimensionals, use multipurpose glue to adhere to card front
- Stamp sentiment & die-cut; also die-cut the black label; adhere sentiment to the black label with multipurpose glue, then use dimensionals to adhere to card front
- Using the Sweet Sorbet (dark) color in the heart on cat image; color the pearls and adhere as desired.

Favored Flowers Love Card



All images © 1990-2022 Stampin' Up!®

Supplies:

- Stamp Sets: Love for you (160398), Fragrant Flowers (160454)
- Cardstock: Blackberry Bliss (133675), Fresh Freesia (155613), Shimmery White (101910)
- Designer Paper: Favored Flowers 12" x 12"(160833)
- Ink: Blackberry Bliss (147092)
- Tools & Accessories: Stampin Cut & Emboss (149653), Stylish Shapes Dies (159183), Opaque Adhesive backed Gems (160412), Dimensionals (104430), Paper snips (103579)

Measurements:

- Card Base: 4 1/4" x 11" Blackberry Bliss. Scored at 4 1/4", and again at 2 1/8"
- Cardstock #2: Fresh Freesia 4" x 5 1/4"
- Cardstock #3: Shimmery White scrap (for stitched circle)
- Designer Paper: 5 1/8" x 2", 1/2" x 4", flowers fussy cut

Instructions:

- Locate flowers as desired from DSP and fussy cut out. I used a large one for front of the card, and a smaller design for inside the card.
- Adhere DSP to the front flap of the card.
- Using the large stitched circle die, cut out shimmery white
- Adhere circle to the front layer, (taking care to only apply adhesive to the Left Hand portion of the circle)
- Adhere large flower to the circle using dimensionals.
- Stamp Love on shimmery white scrap, adhere over floral image as shown.
- Stamp "So Much Love" in Blackberry ink on Fresh Freesia layer, adhere inside card
- Add 1/2" strip and smaller fussy cut flowers inside card



Adorable Owls



All images © 1990-2022 Stampin' Up!®

Supplies:

- Stamp Sets: Adorable Owl (160269)
- Cardstock: Basic White Thick (159229), Basic White (159276), Night of Navy (100867)
- Ink: Memento Black (132708), Balmy Blue (146982), Basic Gray (121044)
- Stampin' Blends: Smoky Slate (154904), Pumpkin Pie (154897)
- Tools & Accessories: Basic Borders Dies (155558), Blending Brush (153611), Wink of Stella (141897)

Measurements:

- Basic White Thick: 4 1/4" x 11"
- Basic White: 3 3/4" x 5" (x3)
- Night of Navy: 3 7/8" x 5 1/8" (x2)

Instructions:

- Score your Basic White Thick at 5 1/2", fold & burnish.
- With one of your Basic White, place in the Stampin' Cut & Emboss machine with the clouds die at the top, run through. Take Die and put on other end of White you just die cut and place the clouds die at the top of that side, run through. Cut in half, with Blending Brush, go over a little on one side using Basic Gray ink. Take the Wink of Stella and go over JUST the edges, to give that shimmer. Set aside.
- With the Blending Brush, go over another Basic White with Balmy Blue ink. Do NOT make it too dark!
- Stamp flying Owl in top left corner using Memento Black ink. Color using Blends.
- Stamp front Sentiment in top right as shown using Memento.
- Now, lay down one cloud, so it is under the owl, adhere flat. With the other side of clouds, line up flat edge with bottom, place Dimensionals on back and place on front as shown.
- Layer onto Night of Navy and adhere to front of card.

- Stamp Owl with party hat using Memento on last Basic White in right corner for inside. Color as you did on front.
- Stamp sentiment on inside using Memento black. Adhere to Night of Navy then adhere inside card.
- Add Gems to front as shown.

Thanks A Bunch



Measurements

Cut	QTY	Paper	Length	Width
Cut	1	Garden Green Cardstock	8 1/2"	5 1/2"
Cut	2	Basic White Cardstock	5 1/4"	4 "
Cut	1	Dandy Designs DSP	Select	4 "
Cut	1	Mango Melody Cardstock	5 "	1/2"
Cut	1	Pumpkin Pie Cardstock	4 1/4"	2 1/2"
Cut	1	Basic White Cardstock	4 1/8"	2 3/8"
Cut	1	Pumpkin Pie Cardstock	3 "	1/2"

Stamps /Bundles/ Suites & Kits

- Thanks A Bunch 160816

Paper

- Dandy Designs 12" X 12" Designer Series Paper 160836
- Basic White 8 1/2" x 11" Cardstock 159276
- Garden Green 8 1/2" x 11" Cardstock 102584
- Mango Melody 8 1/2" x 11" Cardstock 146989
- Pumpkin Pie 8 1/2" X 11" Cardstock 105117

Ink

- Granny Apple Green Classic Stampin' Pad 147095
- Pumpkin Pie Classic Stampin' Pad 147086
- Garden Green Classic Stampin' Pad 147089

Embellishments

- 2022-2024 In Color Baker's Twine Pack 159195

Tools

- Bone Folder 102300
- Paper Snips Scissors 103579
- Paper Trimmer Metric Blade Guide 154980
- Stampin' Cut & Emboss Machine 149653
- Stampin' Dimensionals 104430
- Stampin' Seal 152813
- Gingham Embossing Folder 157627

Instructions

Cut and fold your card base from the Garden Green card stock; 8 1/2' x 5 1/2'; scored at 4 1/4"

Add one of the 5 1/4" x 4 Basic White card stock to the inside of the card base.

Take a piece of the Garden Green/Granny Apple Green "X" pattern paper from the Dandy Designs and cut to 5 1/4" x 4". Next make a pencil tick mark at 1 1/4" from top left and the bottom right. Using your trimmer align the tick marks in the channel and cut on the diagonal from tick mark to tick mark. Adhere one of the cut panels to your other 5 1/4" x 4" piece of Basic White card stock.

Take your 5" x 1/2" strip of Mango Melody and adhere on the diagonal above the Green 'X' paper and trim off any overhang.

Adhere the above layered panel to the front of your card base.

Using the smallest Basic White piece and Pumpkin Pie Ink, stamp the base of the carrot, 3 times, stamping off the ink once.

Then use the detailed carrot stamp, and stamp the Pumpkin Pie Ink full strength over the carrot base.

Using the large full leaf inked with Granny Apple Green stamped off once add leaves to the top of the carrots by using the 2nd and 3rd generation of ink.

Next, using full strength Granny Apple Green in add the smaller fine parsley like leaves to each carrot.

Now run this panel through the Stampin' Cut & Emboss machine, using the Gingham embossing folder.

Attach this embossed panel to the Pumpkin Pie Layer and adhere to the middle of the the card using Stampin' Dimensionals.

Stamp the sentiment with Garden Green on the smallest strip of Mango Melody and cut the sentiment to 2 pieces as show in photo.

Finally, add a small Parakeet Party twine bow.



THANKS

a bunch

Thanks Friend



Measurements

Cut	QTY	Paper	Length	Width
Cut	1	Thick Basic White Cardstock	8 1/2"	5 1/2"
Cut	1	Calypso Coral Cardstock	4 "	5 1/4"
Cut	1	Favored Flowers DSP	3 "	3 3/4"
Cut	1	Favored Flowers DSP	2 "	3 3/4"
Cut	1	Calypso Coral Cardstock	1 "	3 3/4"
Cut	1	Basic White Cardstock	3/4"	3 1/2"

Stamps /Bundles/ Suites & Kits

- Fragrant Flowers Bundle 160460
- Go-To Greetings 158763

Paper

- Favored Flowers 12" X 12" Designer Series Paper 160833

Ink

- Calypso Coral Classic Stampin' Pad 147101

Tools

- Black Stampin' Dimensionals 150893
- Mini Stampin' Dimensionals 144108
- Multipurpose liquid glue 110755
- Tear & Tape Adhesive 154031

Instructions

Cut & fold Card Base, layer the Calypso to card base also.

Pick what side of DSP you want showing on the front, then flip them over and add a small strip of tear tape to secure both DSP layers together. " this will help you line them up better"

Once the two DSP layers are attached layer them to the card base.

Stamp both sentiments in Calypso Coral ink, die cut the "Friend" and pop dot to the bottom of the card. Add the "thanks" to the Calypso Coral strip and pop dot to card.

You can also pull in other sentiments as well, I pulled in Happy Birthday "Friend" from the Go-To Greetings set.

Each DSP pack has the coordinating colors on the back, use any color ink or cardstock to match the DSP



All images © 1990-2022 Stampin' Up!®

Supplies:

- Stamp Sets: Adorable Owls (160269), Love for You Bundle(160406)
- Cardstock: Thick Basic White(159229) Basic White (159276)
- Ink: Starry Sky (159212)
- Paper: Rain or Shine (160540)

Tools & Accessories

- Dimensionals (104430), Paper Trimmer (152392) Smoky Slate Blends (154904) Pool Party Blends (154894), Mango Melody Blends (154888), Wink of Stella (141897) Queen Bee dies (for heart) (160484)

Measurements:

- Basic White thick cardstock 7 ½" by 8 ½" scored at 3 ¾".
- Rain or Shine patterned paper 3 ⅜" by 8 ⅜".
- Scraps of basic white to stamp words and two owls.

Instructions:

1. Score your thick basic white at 3 ¾" on the short side and fold in half.
2. Adhere rain or shine paper to your card front.
3. Stamp your words in Starry Sky on basic white paper and die cut.
4. Stamp your owls on basic white paper, colour with Blends. I used light smoky slate for the body and wings and mango melody for the beak and talons. For the white parts,

brush with Wink of Stella glitter brush. Tip: when your Wink of Stella is empty, do NOT throw it out. Open it up and refill it with 99% isopropyl alcohol and shake vigorously. Good for another six months!

5. Pop up your owls on your card front using dimensionals. Add your words using liquid glue. Finish off your card with the gems of your choice. I used iridescent rhinestones basic jewels (158130)
6. If you like die cut a red heart using the tiny heart die from the Queen Bee dies or use any small heart die or punch that you have on hand. There is a larger one included in the Love for You bundle as well. I fussy cut a daisy from the Rain or Shine paper as well.



SO MUCH LOVE Card



All images © 1990-2023 Stampin' Up!®

Supplies:

- Stamp Sets: Love For You (160398)
- Cardstock: Balmy Blue (146982), Coastal Cabana (131297), Basic White (159276), Basic White Envelope (159236)
- Designer Paper: Dandy Designs 12" x 12" (160836)
- Ink: Balmy Blue (147105), Coastal Cabana (147097)
- Tools & Accessories: Stylish Shapes Dies (159183), Country Bouquet Punch (160382), Pool Party $\frac{3}{8}$ " Grosgrain Ribbon (160430), Pastel Adhesive-Backed Sequins (160387)

Measurements:

- Cardstock #1: Balmy Blue 5 $\frac{1}{2}$ " x 8 $\frac{1}{2}$ "
- Cardstock #2: Coastal Cabana 3 $\frac{3}{4}$ " x 5" (x2)
- Cardstock #3: Basic White 3 $\frac{1}{2}$ " x 4 $\frac{3}{4}$ ", 4" x 4" (scrap)
- Designer Paper: 1 $\frac{1}{2}$ " x 3 $\frac{1}{2}$ ", 2" x 3 $\frac{1}{2}$ ", 1" x 1" (scrap)

Instructions:

- Score card base at 4 $\frac{1}{4}$ ".
- Adhere Designer Paper to Coastal Cabana piece as shown. Wrap 6" of ribbon over seam and adhere to back side. Attach to card base.
- Stamp sentiment onto Basic White scrap with Balmy Blue ink. Die cut with largest square die, leaving space on bottom edge for smaller sentiment to be stamped with Coastal Cabana ink. Add to card front with Stampin' Dimensionals.
- Punch small heart from Designer Paper scrap and adhere as shown.
- Add ribbon bow and sequins as shown.

- For the inside, stamp hearts with Balmy Blue ink onto Basic White. Adhere to Coastal Cabana piece and attach to inside of card. Stamp envelope to coordinate.

Favored Flowers Fun Fold Card



All images © 1990-2022 Stampin' Up!®

Supplies:

- Stamp Sets: Sending Support (160822)
- Cardstock: Calypso Coral (122925), Basic White (159276)
- Designer Paper: Favored Flowers (160833)
- Ink: Calypso Coral (147101)
- Stampin' Blends:
- Tools & Accessories: Iridescent Pastel Gems (160429), Painted Labels Dies (151605), Tree Rings Hybrid EF & Dies (159888), Evening Evergreen Open Weave Ribbon (155573), Paper Snips (103579)

Measurements:

- Card Base: 4 ¼" x 5 ½"

- Cardstock #1: 3 1/2" x 7", score at 3 1/2"
- Cardstock #2: 3 1/4" x 3 1/4"
- Designer Paper: 3 1/4" x 3 1/4", 5 1/4" x 11", score at 1 3/4", 3 1/2", 5 1/4" and 7"

Instructions:

- Cut a 4 1/4" x 5 1/2" piece of Calypso Coral card stock.
- Cut a 5 1/4" x 11" piece of Favored Flowers DSP. Score at 1 3/4", 3 1/2", 5 1/4" and 7".
- Adhere the back panel of the DSP to the Calypso Coral piece and then accordion fold the rest of the DSP so that it lays flat on the card front.
- Cut a 3 1/2" x 7" piece of Calypso Coral card stock. Score at 3 1/2". Adhere the left side of the front piece (don't put adhesive all over this piece) to the top fold of the DSP. Adhere the right side of the back piece to the last fold on the DSP. This Calypso Coral card stock piece should lay flat when the card is closed.
- Cut a 3 1/4" x 3 1/4" piece of Favored Flowers DSP and adhere to the front square on the card.
- Stamp "There are so many ways..." in Calypso Coral ink on Basic White card stock.
- Die-cut the sentiment, along with the Calypso Coral piece behind it, using the Painted Labels Dies. Adhere these pieces together and add to the card front with Dimensionals.
- Cut a flower from Favored Flowers DSP with your Paper Snips and add to the card front with Dimensionals.
- Die-cut a leaf in Evening Evergreen card stock using the Tree Rings Dies and adhere behind the flower.
- Tie an Evening Evergreen Open Weave Ribbon bow and adhere to the flower with a Mini Glue Dot.
- Add two Iridescent Pastel Gems to the sentiment.
- Cut a 3 1/4" x 3 1/4" piece of Basic White card stock. Stamp "alone shouldn't be one of them" in Calypso Coral ink and adhere this piece to the inside Calypso Coral flap.



Pop Up Z fold Block Card-Country Bouquet



Measurements

Cut	QTY	Paper	Length	Width
Cut	Base	Mint Macaron Cardstock	4 1/4"	9 1/2"
Cut	Layer 1 -Panel 1	Sweet Sorbet Cardstock	4 1/8"	1 7/8"
Cut	Layer 2 -Panel 1	Country Floral Lane DSP	4 "	1 3/4"
Cut	Layer 1- Panel 2	Sweet Sorbet Cardstock	4 1/8"	1 7/8"
Cut	Layer 2- Panel 2	Country Floral Lane DSP	4 "	1 3/4"
Cut	Layer 1 -Back Inside Panel	Sweet Sorbet Cardstock	4 "	5 1/4"
Cut	Layer 2 -Back Inside Panel	Country Floral Lane DSP	3 3/4"	5 "
Cut	Block 1-Base	Mint Macaron Cardstock	3 1/4"	5 "
Cut	Block 1-Layer 1	Sweet Sorbet Cardstock	3 1/8"	1 3/8"
Cut	Block 1-Layer 2	Country Floral Lane DSP	3 "	1 1/4"
Cut	Block 2 -Base	Mint Macaron Cardstock	2 1/2"	4 "
Cut	Block 2 -Layer 1	Sweet Sorbet Cardstock	2 3/8"	1 3/8"
Cut	Block 2-Layer 2	Country Floral Lane DSP	2 1/4"	1 1/4"
Cut	Block 3- Base	Mint Macaron Cardstock	1 1/2"	3 "
Cut	Block 3-Layer 1	Sweet Sorbet Cardstock	1 3/8"	1 3/8"
Cut	Block 3-Layer 2	Country Floral Lane DSP	1 1/4"	1 1/4"
Cut	Large Sentiment	Basic White Cardstock	1/2"	3 "
Cut	Small Sentiment	Basic White Cardstock	1/2"	1 1/4"

Stamps /Bundles/ Suites & Kits

- Country Bouquet Bundle 160383

Paper

- Country Floral Lane 12" X 12" Designer Series Paper 160375
- Basic White 8 1/2" x 11" Cardstock 159276
- Mint Macaron 8 1/2" x 11" Cardstock 138337
- Sweet Sorbet 8 1/2" x 11" Cardstock 159268

Ink

- Sweet Sorbet Classic Stampin' Pad 159216

Tools

- Country Bouquet Punch 160382
- Multipurpose liquid glue 110755
- Paper Snips Scissors 103579
- Paper Trimmer 152392
- Stampin' Dimensionals 104430

Instructions

Cut all pieces of paper to the dimensions above
The Mint Macaron Card base will need to be scored on the long side at 2" and 4".
Using Layer 1 Panel 1 and layer 2 Panel 1 adhere them with liquid glue. Paste them on the first small panel on the Mint Macaron card base
Using Layer 1 Panel 2 and layer 2 Panel 2 adhere them with liquid glue. Paste them on the second small panel on the Mint Macaron card base
Using Layer 1 Back Inside Panel, and Layer 2 Inside Back Panel, glue them together and adhere to last panel of the Mint Macaron Card Base
Next Using Block 1 Base, score it at 1 1/2", 3, 4 1/2" on the long side.
On the second panel next to the 1 1/2" score line you will adhere the Sweet Sorbet Block 1 Layer 1. Then on top of the Sweet Sorbet, Block 1 layer 2. You will then glue the 1 1/2" piece to the second panel on the card base. Then the small score line is adhered to the back inside panel. See picture 1 below
Next Using Block 2 Base, score it at 1", 2 1/2", 3 1/2" on the long side.
On the second panel next to the 1" score line you will adhere the Sweet Sorbet Block 2 Layer 1. Then on top of the Sweet Sorbet, Block 2 layer 2. You will then glue the 1" piece to the first block on the card base. Then the small score line is adhered to the back inside panel. See picture 1 below
Next Using Block 3 Base, score it at 1/2", 2", 2 1/2" on the long side.
On the second panel next to the 1/2" score line you will adhere the Sweet Sorbet Block 3 Layer 1. Then on top of the Sweet Sorbet, Block 3 layer 2. You will then glue the 1/2" piece to the second block on the card base. Then the small score line is adhered to the back inside panel. See picture 1 below
Punch out 3 hearts in Sweet Sorbet Cardstock and adhere to the 1st base panel with dimensionals
Punch a heart out of the designer paper and adhere with dimensionals on base 1st panel

Using the larger basic white piece of cardstock stamp Happy Valentines Day in Sweet Sorbet Ink. Adhere with liquid glue on the left side only even with the designer paper on base panel 1

On small piece of basic white cardstock stamp I love you in sweet sorbet ink and adhere with liquid glue to the center of Block 3

My Door Is Always Open Card



All images © 1990-2023 Stampin' Up!®

Supplies:

- Stamps: Warm Welcome Bundle (160704)
- Ink: Highland Heather (147103), Subtles Stampin' Write Markers (147156)
- Cardstock: Subtles Assortment (146978), Basic White (159276), Butterfly Kisses 6" x 6" Designer Series Paper (159112)
- Tools & Accessories: Classic Matte Dots (158146), Wink of Stella Glitter Brush (141897), Multipurpose Liquid Glue (110755), Paper Snips (103579), Stampin' Cut & Emboss Machine (149653)

Measurements:

- Layer A: 8-1/2" x 5-1/2" Highland Heather
- Layer B: 2-3/4" x 4-1/4" DSP (card front)
- Layer C: 5-1/4 x 4" Basic White
- Layer D: 2-1/4" x 4" DSP (inside panel)
- Layer E: 2" x 3-1/2" Mint Macaron
- Layer F: Scrap Calypso Coral
- Layer G: 3" x 3" Basic White
- Layer H: 3-1/4" x 5-1/2" Petal Pink
- Layer I: 4" x 1" DSP

Card Instructions:

- Measuring along the 8-1/2" side, score Layer A at 4-1/4". Without moving Layer A, cut down to 2-3/4". Turn place card front at 2-3/4" measuring along the 5-1/2" side. Cut to the score line so it meets your previous cut. Remove this panel and save, we'll refer to this as Layer J.
- Adhere Layer B to the half card front panel on Layer A.
- Using Calypso Coral ink, stamp the door on Layer H. Cut out with the coordinating die.
- Using Black ink, stamp the hand with flowers on Layer G. Using Highland Heather ink, stamp the two greetings also on Layer G.
- Cut out hand with flowers and the Hello both with the coordinating dies.
- Use Paper Snips to cut around the inside greeting.
- Adhere Layer C to the inside panel of Layer A.
- Cut out Layer E using the rectangle die.
- Adhere inside greeting to die-cut Layer E and then that to Layer D.
- Adhere layered greeting centered on the inside card panel (Layer C).
- Adhere door to Layer J. Adhere lower portion of Layer J to the half card front panel. Be sure to only put glue on lower half so you do not glue the card closed. Center so that it is covering the inside greeting.
- Cut two larger hearts from Layer F. Coat with Winks of Stella. When dry adhere around inside greeting.
- Cut three small hearts from Layer F. Adhere one each on the square door panels on die-cut Layer H.
- Adhere hand with flowers centered in the open door by placing a dimensional behind the bouquet and some glue behind the arm. This allows the flower bouquet to pop up a bit!
- Adhere the Hello greeting to the open door below the hand with flowers using dimensionals.
- Lastly add a small Black Classic Matte Dot to the door knob.



Country Bouquet Card

All images © 1990-2023 Stampin' Up!®

Supplies:

- Stamp Set: Country Bouquet (160377)
- Cardstock: Basic White (159276), Mint Macaron (138337)
- Designer Paper: Country Gingham (160388)
- Ink: Sweet Sorbet (159216), Mint Macaron (147106)
- Tools & Accessories: Stampin' Seal (152813), Stampin' Dimensionals (104430), Paper Snips (103579), Stampin' Trimmer (152392), Pastel Adhesive-Backed Sequins (160387), Country Bouquet Punch (160382), Stampin' Cut & Emboss Machine (149653), Stylish Shapes Dies (159183), Scalloped Contours Dies (155560)

Measurements:

- Cardstock #1 (Basic White Card Base): 5 1/2" x 8 1/2"; score along the 8 1/2" @ 4 1/4"
- Cardstock #2 (Mint Macaron): 3 3/4" x 5"
- Cardstock #3 (Basic White): 3 1/2" x 3 1/2"
- Cardstock #4 (Basic White): 2 3/4" x 1 1/2"
- Cardstock #5 (Basic White): scrap piece
- Designer Paper #1: 3 5/8" x 4 7/8"

Instructions:

- Cut Cardstock #1 to create the card base.
- Adhere the Designer Paper #1 to Cardstock #2 using Stampin' Seal.
- Adhere Cardstock #2 to Cardstock #1 using Stampin' Dimensionals.
- Ink the floral/heart image in Sweet Sorbet ink and stamp on Cardstock #3. Ink the leaves image in Mint Macaron ink, align image with the floral/heart image and stamp. Using the Stylish Shapes Dies, cut out the heart image using the large circle. Adhere to card using Stampin' Dimensionals.

- Ink the small heart image in Sweet Sorbet and stamp on Cardstock #5. Use the punch to cut out the heart. Add a Stampin' Dimensional to the back of the heart and attach to the large stamped heart.
- Ink the greeting in Sweet Sorbet and stamp on Cardstock #4. Use the Scalloped Contours Dies and cut out. Adhere the greeting to card using Stampin' Dimensionals.
- Embellish with clear sequins to finish the card.

Coming Up Carrots Card



All images © 1990-2022 Stampin' Up!®

Supplies:

- Stamp Set: Thanks a Bunch (160816)
- Bundle:
- Cardstock: Mango Melody (146989), Basic White (159276)
- Designer Paper: Dandy Designs (160836)
- Ink: Mango Melody (147093), Garden Green (147089)
- Stampin' Blends:
- Tools & Accessories: Double oval Punch (154242), Iridescent Rhinestones (158130), White Glittered Organdy Ribbon (156408), Paper Trimmer (152392), Multipurpose Liquid Glue (110755), Dimensionals (104430)

Measurements:

- Base: Mango Melody 4-1/4 x 11, scored at 5-1/2
- Designer Series Paper: 3-3/4 x 5
- Card Stock #1: Basic White 4 x 5-1/4
- Card Stock #2: Basic White 4 x 5-1/4
- Card Stock #3: Basic White scraps

Instructions:

- Adhere DSP to Basic White layer
- Stamp carrot image 3 times on Basic White card stock scraps in Mango Melody ink. Cut with scissors
- Stamp carrot top image 3 times on Basic White card stock scraps in Garden Green ink. Cut with scissors
- Attach carrots and carrot tops to DSP stack with dimensionals
- Wrap ribbon around box and tie knot
- Stamp greeting in Garden Green ink on Basic White card stock scrap. Punch with Double Oval Punch. Attach to card with dimensionals
- Embellish with rhinestones
- Decorate 2nd Basic White layer as desired. Adhere to inside of card

Dainty Flowers & Beautifully Happy



All images © 1990-2022 Stampin' Up!®

Supplies:

- **Stamp Sets** – *Beautifully Happy [160804]
- **Card Stock** – Crumb Cake [120953], Old Olive [100702], Basic White [159276]
- **Stamp Pads** – Old Olive [147090], Shaded Spruce [147088], Blushing Bride [147100], Rich Razzleberry [147091], Crushed Curry [147087], Gray Granite [147118], Balmy Blue [147105], Tuxedo Black Memento Ink Pad [132708]
- **Misc.** – Stampin' Cut & Emboss Machine (149653); Paper Snips (103579), Paper Trimmer (152392), Blender Pens [102845], Stamparatus [146276], Stampin' Dimensionals [104430], Mini Glue Dots [103683], Multipurpose Liquid Glue [110755], Clear Wink Of Stella Glitter Brush [141897], Tear & Tape Adhesive [138995], Balmy Blue & White 1/2" Ribbon [160448], Flat Adhesive Backed Pearls [160449], On the Ocean Dies [160774], *Dainty Flowers Designer Series Paper 12" x 12" [160834]
*Sale-a-bration January 2023

Measurements:

- Crumb Cake – 8 ½" x 5 ½"
- Old Olive – 1 ½" x 5 ½"
- Basic White – 3" x 4 ½"
- Dainty Flowers Designer Series Paper: 3" x 5 ½"

Instructions:

1. Fold Crumb Cake card stock in half to create card base.
2. Glue Designer Series Paper to front of card.
3. Run Old Olive card stock through die cutting machine using 'wave' die from "On the Ocean Dies" collection. Use the 'negative' piece and glue onto card using liquid glue.
4. Place a strip of Tear and Tape along the front of card, where the Old Olive card stock and DSP meet. Remove backing and wrap ribbon around, securing onto the tape.
5. Place Basic White card stock inside Stamparatus and position flower outline image from "Beautifully Happy" set. Ink and stamp using Black Memento. Clean stamp and replace with leaves image – ink and stamp first with Shaded Spruce and then Old Olive. Clean stamp and replace with the solid flower images – ink and stamp first with Blushing Bride and then Rich Razzleberry ink pads.
6. Stamp bee and sentiment with Black Memento.
7. Use Blender Pen and ink pads to colour centre of flower and bee.
8. Add Wink of Stella as desired. Place stamped piece on front of card with Stampin' Dimensionals.
9. Add pearls and ribbon bow to finish card.



Adorable Owls Pop-Up Card



All images © 1990-2022 Stampin' Up!®

Supplies:

- Stamp Sets: Adorable Owls Sale-A-Bration (160269)
- Cardstock: Gray Granite (146983), Granny Apple Green (146990), Basic White (159276)
- Designer Paper: Dandy Designs Sale-A-Bration (160836)
- Ink: Jet Black StazOn (101406), Gray Granite (147118), Granny Apple Green (147095), Calypso Coral (147101), Uninked Stampin' Pad & Whisper White Refill (147277)
- Tools & Accessories: Blender Pens (102845), Label Me Lovely Punch (151296), Parakeet Party 1/8" Metallic Woven Ribbon (159196), Beautiful Shapes Dies (158046), Stampin' Dimensionals (104430), Paper Snips (103579), Metal Plated 3D Embossing Folder (160766)

Measurements:

- Card Base: Gray Granite 11" x 4-1/4", score and fold at 4-1/4
- Cardstock #2: Basic White 5-1/4" x 4"
- Cardstock #3: Gray Granite 4-7/8" x 3-3/8"
- Cardstock #4: Basic White 4" x 2"
- Cardstock #5: Basic White 4" x 1/2", scored at 1/2", 1-3/4", 2-1/4" and 3-1/2"
- Designer Paper #1: 4" x 3-1/8", 8" x 4" scored at 4"
- Designer Paper #2: 3-1/8" x 1-1/2", (2) 4" x 1-1/2"

Instructions:

Front Of Card:

- Fold card base on scored line.
- Emboss Basic White Cardstock using the Metal Plated 3D Embossing Folder and glue to card front.
- Using the Label Me Lovely Punch, cut (3) using Granny Apple Green Cardstock. Cut all 3 shapes in half. Glue (2) half pieces to one short end of the smallest designer paper to create a border.
- Glue (1) short piece of designer paper under the punched shapes allowing ¼” on the end to peek through. Glue to smaller Gray Granite Cardstock layer.
- Wrap the ribbon around the designer paper layer and tie into a bow, positioned at the top of the punched shapes. Glue to card front.
- Cut (1) circle shape from the Beautiful Shapes Dies with Basic White Cardstock. Stamp the sentiment at the bottom using Calypso Coral Ink. Glue to card front.
- Stamp the owl image on Gray Granite Cardstock with Jet Black StazOn Ink. Color with a Blender Pen and the inks. Hand-cut with Paper Snips and glue to the circle diecut using Stampin’ Dimensionals.

Inside Of Card:

- Glue (2) half pieces of the punched shape to each end of the larger designer paper layer to create borders. Glue (1) short piece of designer paper to each end under the punched shapes allowing ¼” on the end to peek through. Fold on the scored line and glue to the inside of the card base.
- Stamp the sentiment on the Basic White layer with Calypso Coral Ink at the top and glue to the inside of the card base about 1” from the center.
- Stamp the owl image on Gray Granite Cardstock with Jet Black StazOn Ink. Color with a Blender Pen and the inks. Hand-cut with Paper Snips. Set aside.
- Using the smallest piece of Basic White Cardstock, fold on all scored lines and glue the two ends overlapping each other. Glue to the inside of the card base against the scored line in the center to create the pop-up:



- Glue owl to the pop-up in the center.

Beautifully Happy Embossed



Measurements

Cut	QTY	Paper	Length	Width
Cut	1	Thick Very Vanilla Cardstock	8 1/2"	5 1/2"
Cut	1	Very Vanilla Cardstock	Select	5 1/4"

Stamps /Bundles/ Suites & Kits

- Beautifully Happy 160804

Paper

- Vellum Basics 12" X 12" Specialty Paper 160839
- 12" X 12" Foil Sheets Gold 132622
- 12" X 12" Very Vanilla Cardstock 144239
- 8 1/2" X 11" Thick Very Vanilla Cardstock 144237

Ink

- Versamark Ink Pad 102283
- Cherry Cobbler Stampin' Blends 154880
- Shaded Spruce Stampin' Blends 154903

Embellishments

- Gold Faceted Adhesive-Backed Sequins 160536

Tools

- Cane Weave 3D Embossing Folder 160580
- Heat Tool 129053
- Stampin' Emboss Metallics Powder 155555
- Embossing Additions Tool Kit 159971
- Adhesive Sheets 152334

Instructions

Fold Very Vanilla Thick Card base in half and score.

Take your regular Very Vanilla quarter panel and emboss with the Cane Weave Folder. Adhere to the card base.

Stamp the larger flower shown in Versamark on to a piece of vellum, after you run the embossing buddy over it first. Sprinkle with Gold Embossing Powder and heat set with your heat tool.

Fussy cut out the image and color with Stampin Blends as shown on the BACK side of vellum.

Adhere to a piece of gold foil using adhesive sheet and adhere to foil. Fussy cut again leaving a gold border and adhere to card front with dimensionals.

Embellish with gold sequins.



Hope You Are Feeling Better



Measurements

Cut	QTY	Paper	Length	Width
Cut	1 Base	Basic White Cardstock	5 1/2"	8 1/2"
Cut	1 Layer 1	Basic White Cardstock	5 1/4"	4 "
Cut	1 Layer 3	Fancy Flora DSP	5 1/4"	1 "

Stamps /Bundles/ Suites & Kits

- Beautifully Happy 160804

Paper

- Fancy Flora 6" X 6" Designer Series Paper 160413

Ink

- Pool Party Classic Stampin' Pad 147107

Embellishments

- Pool Party 3/8" Grosgrain Ribbon 160430
- Solid Faceted Gems 159189

Tools

- Multipurpose liquid glue 110755
- Paper Snips Scissors 103579
- Paper Trimmer 152392
- Stampin' Cut & Emboss Machine 149653
- Stampin' Dimensionals 104430
- Stripes & Splatters Embossing Folder 157980

Instructions

Cut the paper as shown above

Run the layer 1 Basic White through the embossing folder on the right hand side.

Next add the designer series paper strip to the left hand side of the basic white paper used in Layer 1. Wrap the ribbon around and then attach to the card base